

Weekly Report

Junming Ke

2016.07.11-2016.07.17

This week my main works are as follows:

1. End the video project with some introduction.
2. We have connected with Dr. Yao for our project: NSVA. And we have further confirmed the requirement of the project.
3. I have directed one group from Singapore with their TianChi competition, I have introduced them some data mining knowledge and how to implement the data mining algorithm.

The details are as follows:

Video introduction:

本视频主要介绍了可视化领域中常用的图表，包括：折线图、条形图、饼图、雷达图、矩形树图、热力图、面积图和气泡图等，并就如何使用 JavaScript 语言和 d3.js 开发一个条形图样例作了展示。统计图表是最早的数据可视化形式之一，作为最基本的可视化元素仍然被广泛使用，对于很多复杂的大型可视化系统来说，这类图表更是作为基本的组成元素不可缺少。视频中详细说明了各种图表的特征、适用领域和不足之处，每种图表都有相应的样例展示，同时在开发编程的过程中，提及了一些开发注意事项和开发技巧，对可视化入门新手有较大帮助。

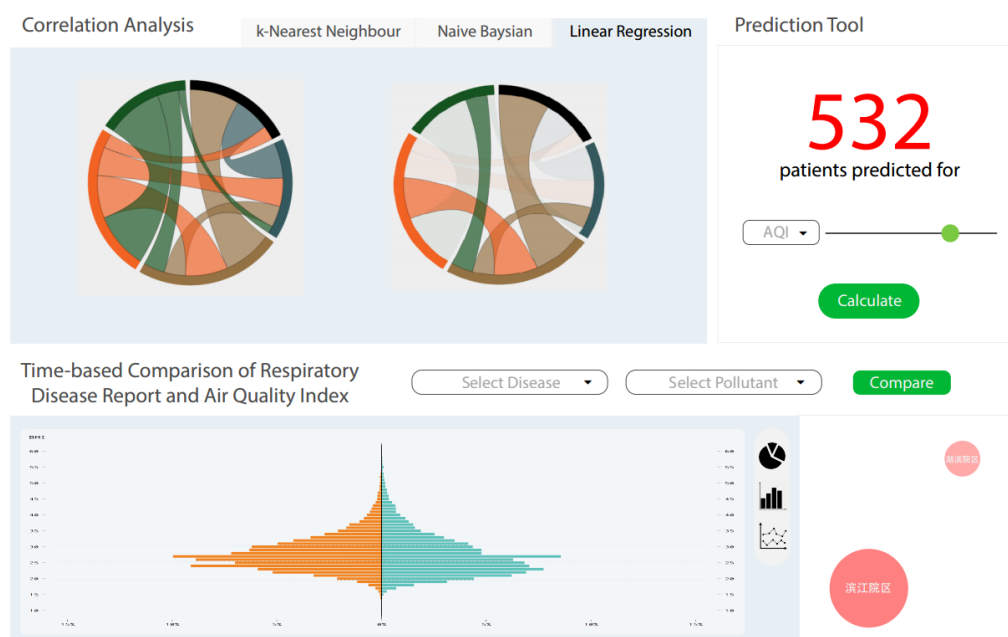
Requirements:

We need further confirmed the data format...

Before that, we do believe what we have done from the beginning were correct, or, on the general direction we were correct.

What we should consider is that tree layout doesn't look nice, so I have prepared use another tree layout to achieve node layout by d3.js.

SUTD competition:



各位：

附件是 关会华 对你们设计稿的意见，请仔细看看里面的suggestion，对你们的system做进一步的修改。

其中有几点我提一下自己的看法：

1: select disease 和 select pollution 和compare 按钮应该在chart的正上方，因为这几个button和map无关。

2: 可以把correlation analysis 的 diagram 再细化一下，让user知道effect的relation分别是which pollution to which disease。对于diagram里面的颜色编码也应该在角落标注出来。

3: Half of the circle will be filled with the air pollution variables and the other half of the circle, the type of illnesses people reported sick for.你们这里的描述与配图不符，请确认后并修改。

如果有什么问题或者不明白的地方，请直接询问我或者关会华。

不要忘了 今天把你们这周的进度和成果发给陈为老师；

请在周二把修改之后的设计稿再发一份给我；

同时我希望你们在下周日之前可以完成整个系统的大致框架(整个页面的展示部分和交互的按钮)，如果analysis部分有困难，可以跟我提出来。

祝好！

柯俊明

2016.7.17



In addition, Jiadong Huang has told me to be responsible for catering for summer classes between 30th July and 31st July.

Next Week:

1. NSVA: tree layout, delete nodes and append nodes, delete lines and append lines, connect SQL, and connect diagram and description.
2. Direct TianChi competition.